

# Windows 7 (32 and 64bit) installation manual

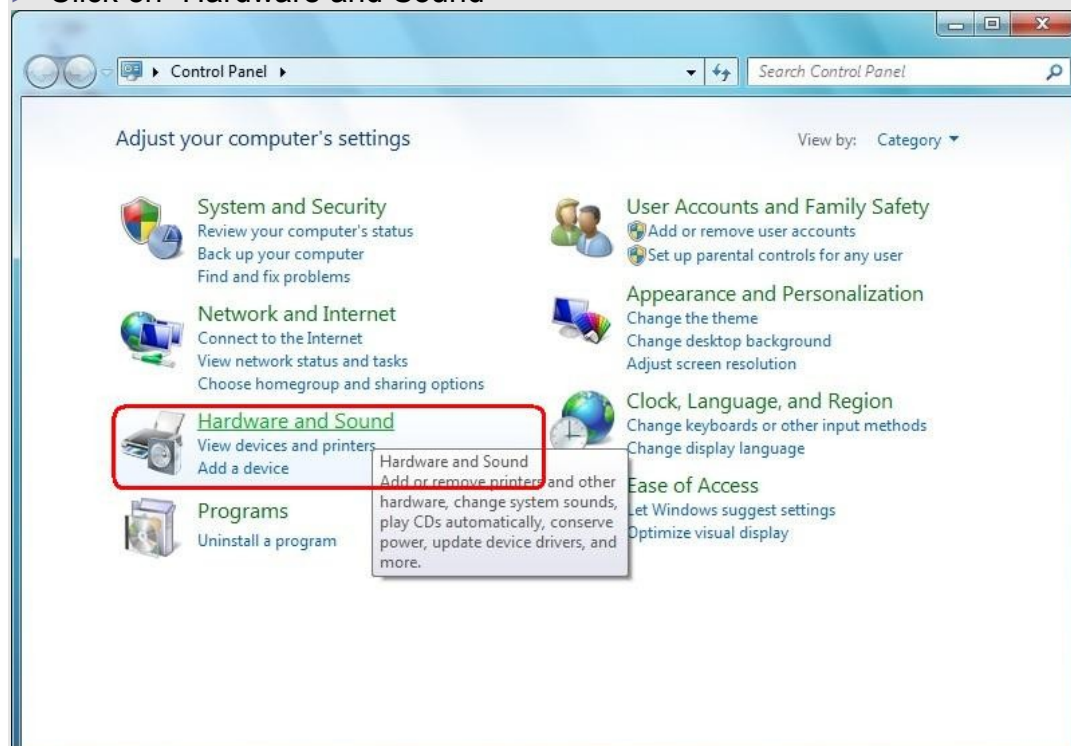
## STEP 1

► Plug in the card reader. Go to START menu and select “Control Panel”



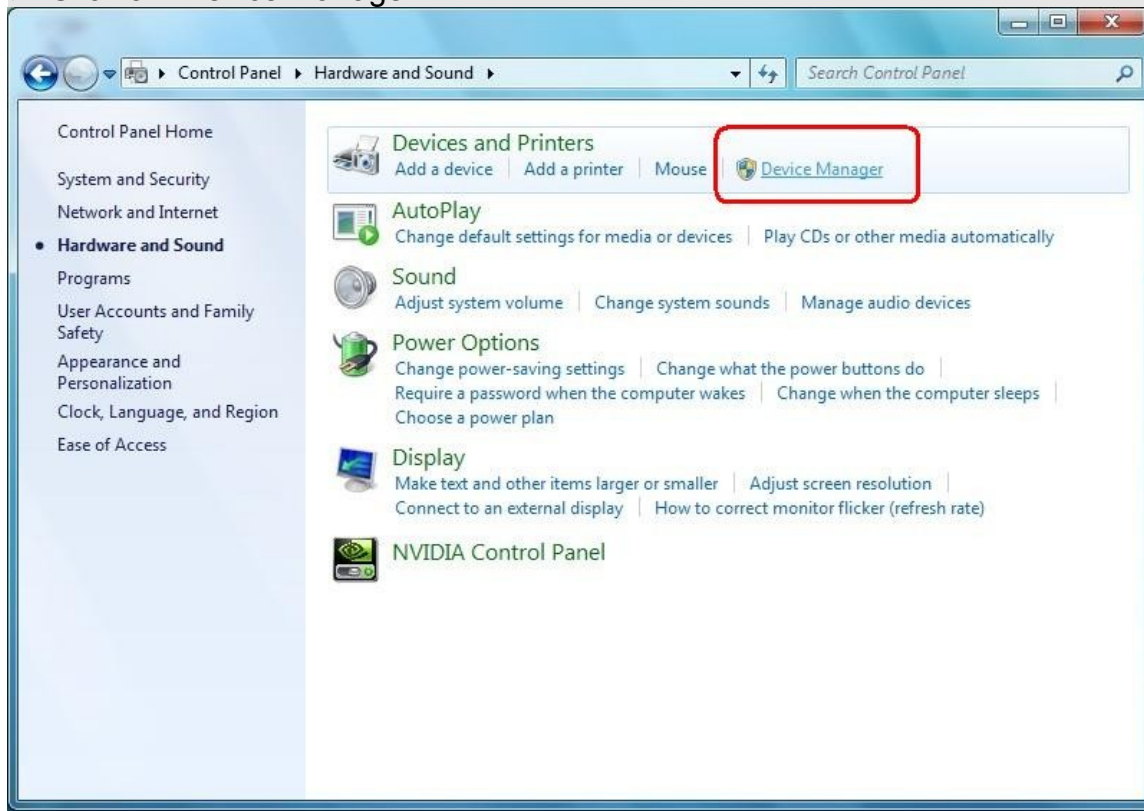
## STEP 2

► Click on “Hardware and Sound”



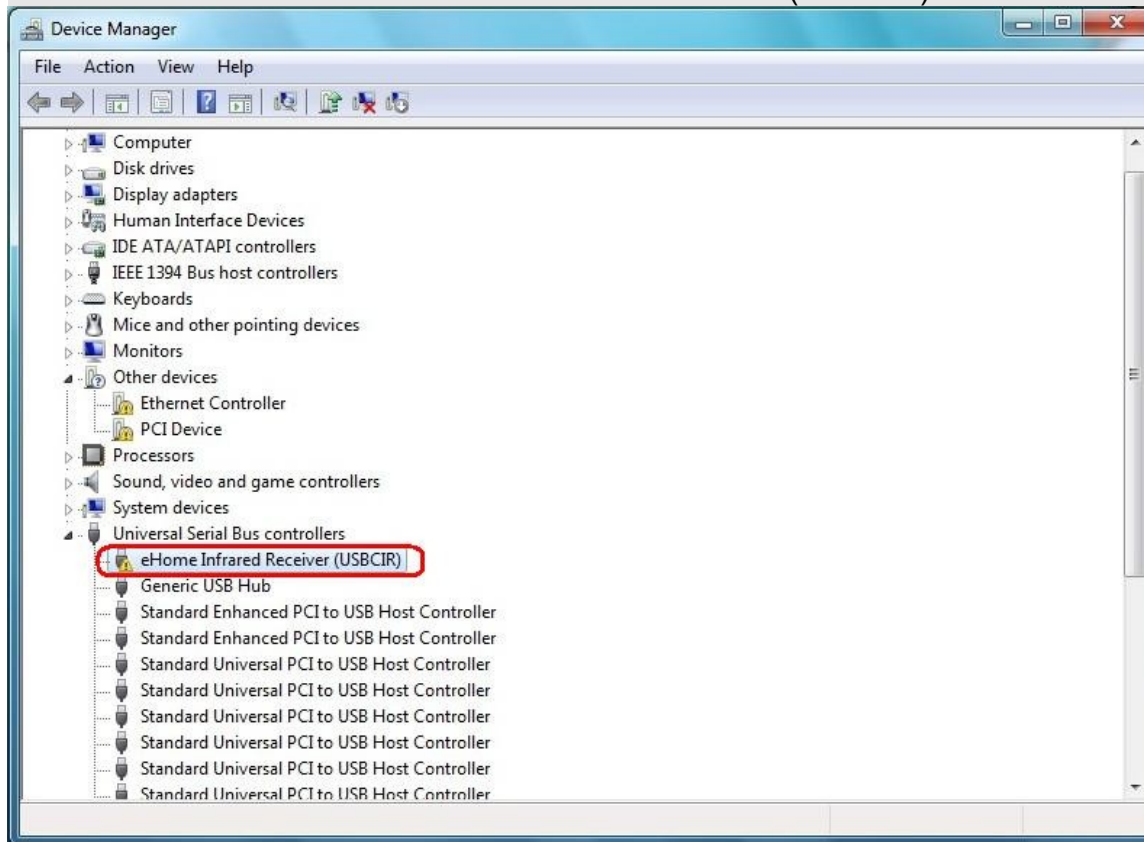
### STEP 3

► Click on “Device Manager”



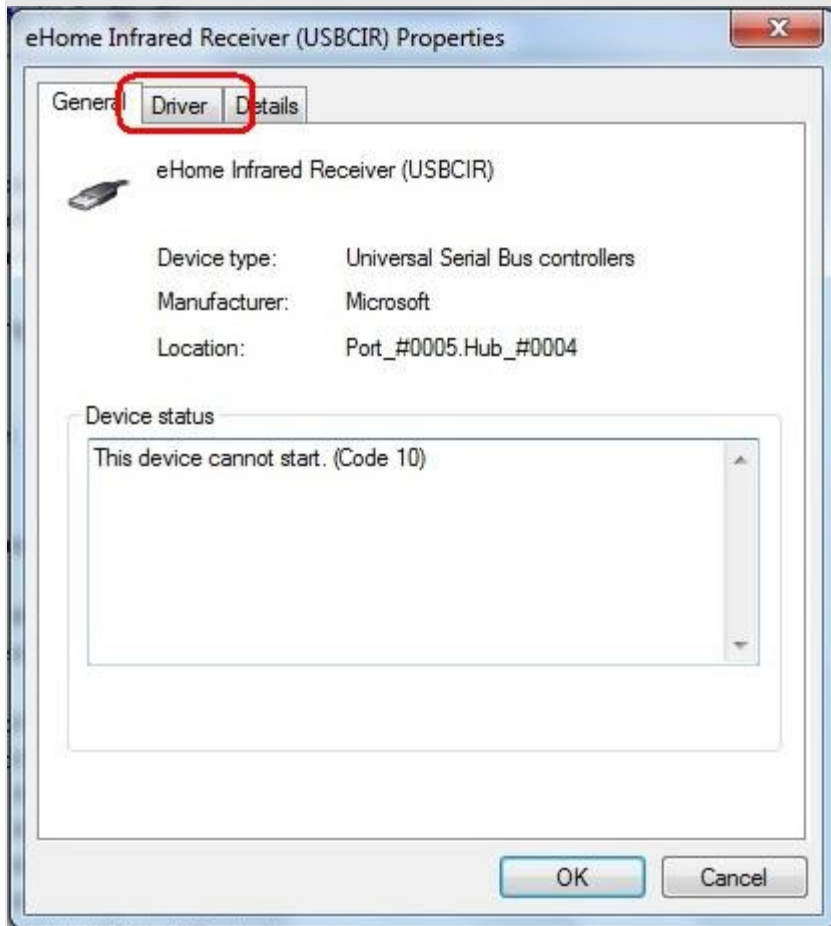
### STEP 4

► Find and double click on “eHome Infrared Receiver (USBCIR)”



## STEP 5

► Go to Driver tab



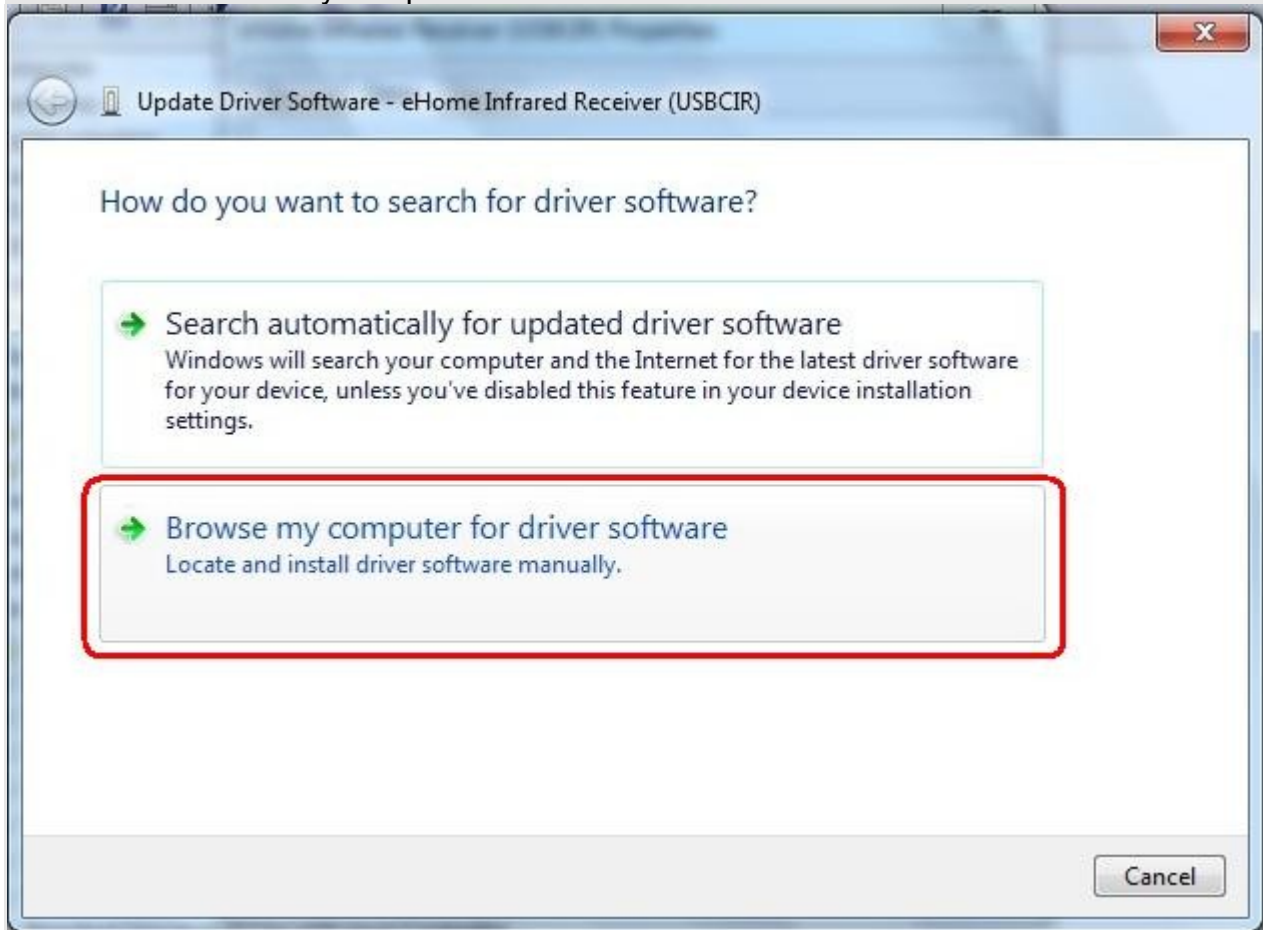
## STEP 6

► Click on "Update Driver..."



## STEP 7

► Click on “Browse my computer for driver software”



## STEP 8

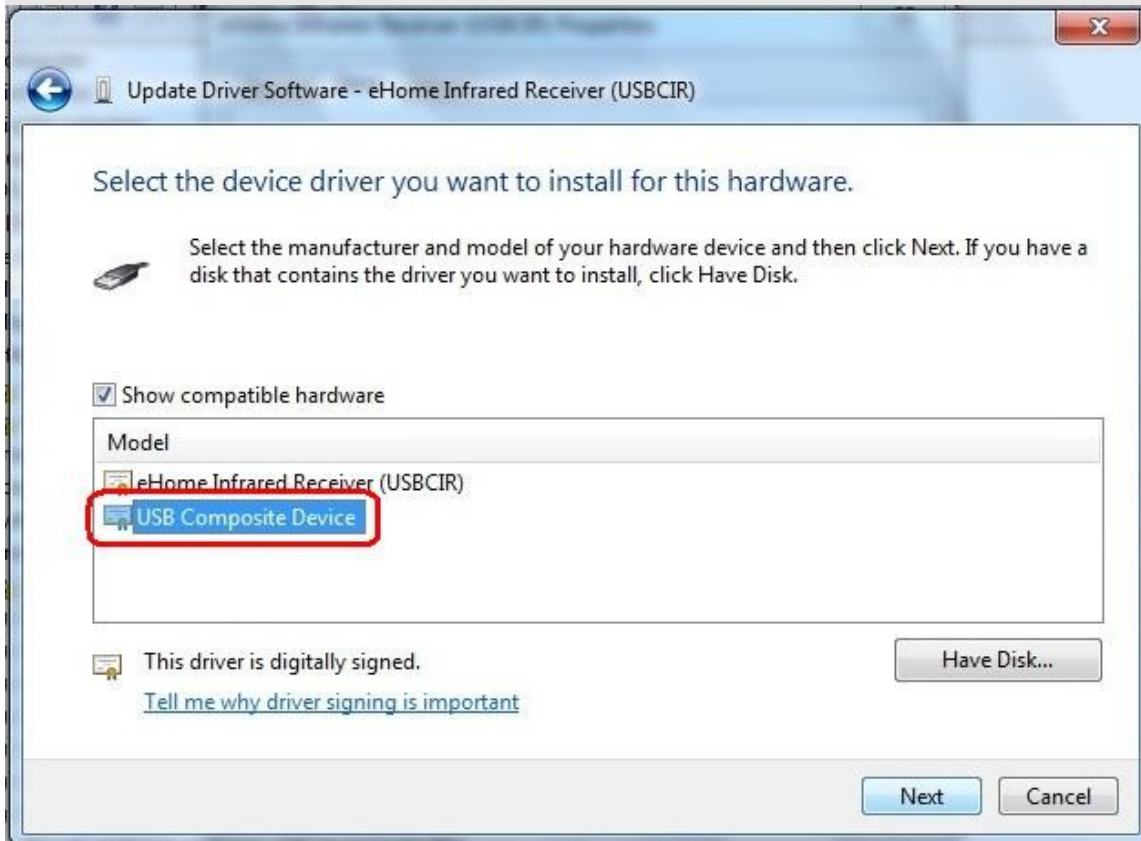
► Click on “Let me pick from a list..”, no need for selecting location





## STEP 9

- ▶ Select “USB Composite Device” and press Next button. Windows 7 will install the driver automatically.



## STEP 10

- ▶ Once the memory card is inserted into card reader a new drive should appear in Windows “Computer” folder.

