

akasa

EV0 blue

EV0 98

Installation Instruction

ENGLISH

Installation Manual

EVO^{blue}

(AK-922)

EVO 98

(AK-921) HEATSINK ONLY



WARNING

Improper Installation will result in damage to the processor. Never switch on the computer system until the fan is connected.

heatsink specification

dimension : 138 x 112 x 75 mm

weight : 754 g

material : aluminium with copper base(bonded) and heatpipes

fan specification (AK-922 only)

dimension: 92 x 92 x 25mm

weight: 98g

speed: 600 – 3000 RPM

airflow: 67.9 CFM max

air pressure: 5.5mm H2O

bearing type: dual ball bearing

voltage rating: 12V

connector: 4-pin (PWM) with 3-pin functionality

noise level: 18 db(A) – 36 dB(A)

AKASA Company notices

The information contained in this document is subject to change without notice. All rights reserved. Reproduction, adaptation, or translation of this material is prohibited without prior written permission of AKASA, except as allowed under copyright laws.

The only warranties for AKASA products and services are set forth in the express warranty statements accompanying such products and services. Nothing herein should be construed as constituting an additional warranty. AKASA shall not be liable for technical or editorial errors or omissions contained herein.

Installation Components

LGA775

(A) X 1pcs



(B) X 4pcs



(C) X 4pcs



(D) X 4pcs



(J) X 1 pcs



AMD K8

(E) X 1pcs



(F) X 1pcs



(J) X 1pcs



(K) X 1pcs



AK-921 (additional parts)

(G) X 1pcs



(H) X 8pcs



(I) X 4pcs



AK-922

for LGA775

1. Place a rubber washer (part D) over each of the screws of the LGA775 backplate (part A).



2. Place the LGA775 backplate under the motherboard aligning the screws to fit through the four holes available around the CPU as illustrated.



3. Place the thick rubber pads (part C) over each of the four (4) screws so they sit on the motherboard as shown.



4. Apply the proper amount of thermal compound on the CPU surface; a thin layer is ideal, extra thermal compound will not improve performance. Make sure the CPU surface is perfectly clean. If not, clean it with Isopropyl or Akasa Timclean.



5. Position the cooler over the four mounting screws. The installation direction of the heatsink will depend on your case and its airflow requirements.



6. Secure the cooler with the collar nuts (part B), one for each screw, tighten the nuts gradually in a crosswise manner.



7. Connect the 2-pin female LED connector to the 2-pin male power connector from the fan.



8. Connect the 4-pin fan connector to the CPU fan motherboard connector. If a connector marked CPU fan is not apparent on the board, check the motherboard manual for fan connection information.



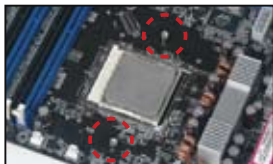
for AMD K8

1. Remove the retention bracket from the motherboard by removing the screws (or pins in some motherboards).

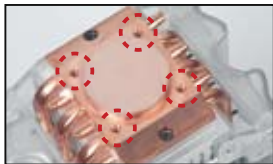
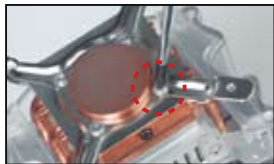
Note: It may be possible that the removal of the original backplate is not required if the cooler spring loaded screws are compatible.



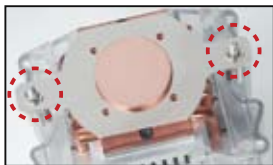
2. Place the backplate provided (Part E) below the motherboard aligning the two standoffs with the holes in the motherboard as illustrated.



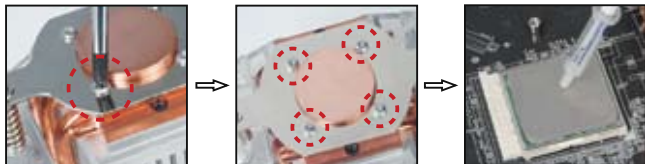
3. Take off the pre-attached LGA 775 heatsink retention bracket and retain the four (4) screws for the next step.



4. Place the K8 heatsink retention bracket (part F) on the heatsink base aligning the fixing screws with the Fan bracket indents and the corresponding screw holes.



5. Secure the heatsink retention bracket with four (4) screws from step three. Apply the proper amount of thermal compound on the CPU surface; a thin layer is ideal, extra thermal compound will not improve performance. Make sure the CPU surface is perfectly clean. If not, clean it with Isopropyl or Akasa Timclean.



6. Place the cooler on top of the CPU; align two spring loaded screws with the backplate standoffs and secure the cooler by tightening the screws.

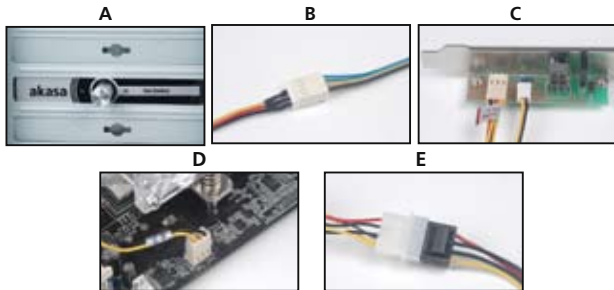


7. Connect the 2-pin female LED connector to the 2-pin male power connector from the fan.



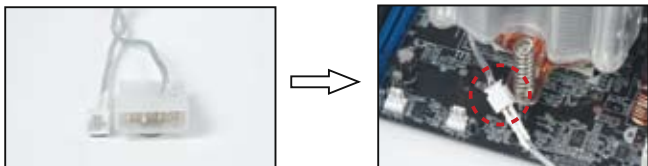
8. Connecting the fan:

- Remove a PCI slot backplate and install the fan control unit (part K).
- Connect the 4-pin fan connector to the male connector of the Y cable.
- Connect the 3-pin female connector (with red / yellow / black wires) to the fan control.
- Connect the 3-pin female connector (with yellow / black wires) to the CPU fan motherboard connector.
- Connect the fan control to the 4-pin PSU connector.



AK-921 (LGA 775 and K8)

For AK-921 installation follow the AK-922 manual steps 1-6 for LGA775 and AMD K8. After that; connect the LED 2-pin connector with 4-pin PSU connector using part G.



You can use provided screws (parts H and I) to attach your favorite fan.